

VLR-8/15/89 NRHP-12/27/90

1926

United States Department of the Interior National Park Service

National Register of Historic Places Registration Form

2025 10 27 10:00

NATIONAL REGISTER

This form is for use in nominating or requesting determinations of eligibility for individual properties or districts. See instructions in Guidelines for Completing National Register Forms (National Register Bulletin 16). Complete each item by marking "x" in the appropriate box or by entering the requested information. If an item does not apply to the property being documented, enter "N/A" for "not applicable." For functions, styles, materials, and areas of significance, enter only the categories and subcategories listed in the instructions. For additional space use continuation sheets (Form 10-900a). Type all entries.

1. Name of Property

historic name BOLLING ISLAND other names/site number DHR-37-03

2. Location

street & number Stokes Station Road city, town Goochland state Virginia code VA county Goochland code 075 zip code 23063

3. Classification

Table with 3 columns: Ownership of Property, Category of Property, and Number of Resources within Property. Includes sub-rows for Contributing and Noncontributing resources.

Name of related multiple property listing: NA Number of contributing resources previously listed in the National Register: NA

4. State/Federal Agency Certification

As the designated authority under the National Historic Preservation Act of 1966, as amended, I hereby certify that this nomination request for determination of eligibility meets the documentation standards for registering properties in the National Register of Historic Places and meets the procedural and professional requirements set forth in 36 CFR Part 60. In my opinion, the property meets does not meet the National Register criteria. See continuation sheet. Signature of certifying official VA DEPT OF HISTORIC RESOURCES Date 9/29/89

In my opinion, the property meets does not meet the National Register criteria. See continuation sheet. Signature of commenting or other official Date State or Federal agency and bureau

5. National Park Service Certification

I, hereby, certify that this property is: entered in the National Register. determined eligible for the National Register. determined not eligible for the National Register. removed from the National Register. other, (explain):

Signature of the Keeper Date of Action

6. Function or Use

Historic Functions (enter categories from instructions)

DOMESTIC: SINGLE DWELLING

DOMESTIC: SECONDARY STRUCTURE

Current Functions (enter categories from instructions)

DOMESTIC: SINGLE DWELLING

DOMESTIC: SECONDARY STRUCTURE

7. Description

Architectural Classification
(enter categories from instructions)

MID-NINETEENTH CENTURY: GREEK REVIVAL

Materials (enter categories from instructions)

foundation BRICK

walls BRICK

roof SLATE

other

Describe present and historic physical appearance.

SUMMARY DESCRIPTION

Bolling Island, a Greek Revival residence that evolved from a late-eighteenth-century modest frame dwelling to an imposing brick plantation house, is situated on a fifty-acre tract of rolling land overlooking the James River in Goochland County. The earlier frame portion, which dates from about 1771, is now the east wing of the principal brick core begun between 1800 and 1810. This early-nineteenth-century section was substantially remodeled between 1820 and 1839 to its present appearance, which is dominated on the river side by a striking two-story portico with a balustraded second level, and to the rear by a two-story brick addition that resulted in a T plan. A collection of three dependencies, each contributing to the significance of the property, is located on the north side of the house.

ARCHITECTURAL ANALYSIS

Bolling Island is located in rural Goochland County five miles east of Cartersville and faces the island in the James River from which it takes its name. The gently rolling landscape gradually slopes to meet the river; the house is situated on a bluff with a commanding view to the south. A drive leads from Stokes Station Road through open fields, passes through a pair of brick piers, and arrives at the west end elevation of the house. This unpaved drive is evident on an 1881 map and is lined on the north by black walnut trees and on the south by cedars. Originally a drive led to, and circled in front of, the porticoed river entrance on the south side.

Begun as a simple frame late-eighteenth-century house, Bolling Island underwent several significant additions and alterations during the first four decades of the nineteenth century. This evolution resulted in a symmetrical composition of a two-story brick residence, balanced by flanking wings, with sophisticated Greek Revival details on the interior. The original frame dwelling, which was built about 1771, remains as the east wing of the house. A brick bearing this date is located in the chimney of this section and the braced frame construction is consistent with this period. Modest in scale and simply detailed, this late-eighteenth-century portion, which may have begun as a hall-parlor plan, is one-and-a-half stories in height and rests on a high brick basement.

8. Statement of Significance

OCT 5, 1980

Certifying official has considered the significance of this property in relation to other properties:

nationally statewide locally

Applicable National Register Criteria A B C D

Criteria Considerations (Exceptions) A B C D E F G

Areas of Significance (enter categories from instructions)

ARCHITECTURE

Period of Significance

c 1771-1845

Significant Dates

c 1771
c 1800 - 1810
c 1820 - 1835
c 1815 - 1825
c 1835, 1845

Cultural Affiliation

NA

Significant Person

NA

Architect/Builder

UNKNOWN

State significance of property, and justify criteria, criteria considerations, and areas and periods of significance noted above.

STATEMENT OF SIGNIFICANCE

Bolling Island is a brick, two-story, single-pile, Greek Revival plantation house with a wood-framed wing on each end. The east wing was constructed in the late eighteenth century and the rest of the dwelling probably was built about 1839. The most notable feature of the house is the two-story Greek Revival-style porch on its south or river front. Owned and built by the Bolling family, whose primary residence was at nearby Bolling Hall, Bolling Island is typical of many early-nineteenth-century plantation houses of the lower Piedmont region of Virginia. It expresses the evolutionary nature of house construction of its period.

JUSTIFICATION OF CRITERIA

Bolling Island is eligible for listing on the National Register of Historic Places under Criterion C. The dwelling illustrates the evolution of a small, vernacular, late-eighteenth-century residence into a Greek Revival-style plantation house. Less sophisticated than the grand mansions of Tidewater, Bolling Island is more typical of its early-nineteenth-century counterparts constructed along the James River above Richmond in the lower Piedmont.

HISTORICAL BACKGROUND

Bolling Island (the house) is located on top of a hill that overlooks Bolling Island (the island) and the James River. Throughout the antebellum and Civil War periods the house was associated with the Bolling family of Goochland County.

The land that comprised most of the Bolling Island tract was acquired by the Bolling family during the eighteenth century. It probably was Thomas Bolling, the father of Colonel William Bolling, who may have built a story-and-a-half, wood-framed, hall-parlor-plan house on the Bolling

See continuation sheet

9. Major Bibliographical References

Auditor of Public Accounts. Land Tax Books. Goochland County. 1820-1850. Virginia State Library and Archives, Richmond, Va. (VSL&A).

Couture, Richard T. "Bolling Island." The Goochland County Historical Society Magazine 4 (1972): 25-31.

Department of Historic Resources. Survey File 37-3. Richmond, Va.

Mutual Assurance Society of Virginia. Declarations. Department of Historic Resources. Richmond, Va.

See continuation sheet

Previous documentation on file (NPS):

- preliminary determination of individual listing (36 CFR 67) has been requested
- previously listed in the National Register
- previously determined eligible by the National Register
- designated a National Historic Landmark
- recorded by Historic American Buildings Survey # _____
- recorded by Historic American Engineering Record # _____

Primary location of additional data:

- State historic preservation office
- Other State agency
- Federal agency
- Local government
- University
- Other

Specify repository:

VIRGINIA DEPT OF HISTORIC RESOURCES
221 GOVERNOR ST, RICHMOND, VA 23219

10. Geographical Data

Acreage of property 50 ACRES

UTM References

A 17 7603600 4171590
 Zone Easting Northing

C 17 760800 4171510

B 17 760220 4171220
 Zone Easting Northing

D 17 760020 4171820

See continuation sheet

Verbal Boundary Description

The boundary at Bolling Island is shown as Parcel "C" on the accompanying plat entitled "A Portion of 'Bolling Island', Lickinghole District, Goochland County, VA, 1962."

See continuation sheet

Boundary Justification

THE BOUNDARY INCLUDES THE HOUSE, FIELDS AND OUTBUILDINGS THAT HAVE HISTORICALLY BEEN PART OF BOLLING ISLAND AND MAINTAIN HISTORIC INTEGRITY.

See continuation sheet

11. Form Prepared By

name/title JOHN SALMON, HISTORIAN; JULIE VOSMIK, ARCHITECTURAL HISTORIAN

organization VA DEPT OF HISTORIC RESOURCES date JULY 1989

street & number 221 GOVERNOR STREET telephone 804-786-3143

city or town RICHMOND state VA zip code 23219

United States Department of the Interior
National Park Service

3, 1989

National Register of Historic Places
Continuation SheetSection number 7 Page 2

Early in the next century a one-and-a-half-story brick addition was made to the west to form the core of the present house. Sometime between 1813 and 1823 a small frame addition was made to the east end of the early frame section. The most dramatic and significant changes occurred during the residence of Thomas Bolling, who was responsible for classicizing the house. Under his direction the house was enlarged, the plan modified, and the portico added. Finally, a west wing was added to the brick structure sometime between 1825 and 1845, thus balancing the overall composition. The site on which the house stands is not level; therefore, the west wing and central core are only slightly above grade, while the east wing rests on a high basement.

The central hipped-roof two-story brick core originated as a one-and-a-half-story central hall addition that was enlarged by Thomas Bolling. It was during his tenure that the house was increased to two stories, the stair hall addition was made to the north and the earlier stair in the central hall was removed (changing the interior configuration to a T plan), Greek Revival detailing was added, and the portico was built on the river side.

The brick of the early one-and-a-half story central section is laid in Flemish bond, whereas the walls above this level are laid in American bond. Though no longer remaining, stucco dating from the time of remodeling covered the brick until it was removed due to deterioration. Evidence of an oxide wash that predates the stucco is still in evidence. The roof is covered with slate, and exterior brick chimneys are located at the east and west ends. The wood cornice is simple.

The pattern of fenestration on the south elevation was changed when the house was remodeled to an arrangement of two center doors flanked on either side by a single triple-hung window on the first floor, and a central door flanked on either side by a window on the second floor. Both first-floor doors are of wood with six panels and have exterior wood lattice screen doors. The first-floor windows on the two principal elevations, the north and south, are triple-hung six-over-six-over-six. The first-floor windows on the east and west elevations, as well as the second-floor windows, are six-over-six double-hung. All windows are equipped with louvered shutters. Doors and windows are detailed with flat lintels with square corner blocks.

The hipped roof extends to cover the south portico, which shelters the full width of this section. The focal point of this elevation, the portico is supported by four paneled square columns embellished with simple molded caps; a Chippendale-inspired railing ornaments the second level. A similar balustrade would have detailed the flat top of the roof. Measuring forty by twelve feet, the portico was last rebuilt in 1897 and the columns were rehabilitated in 1980.

United States Department of the Interior
National Park Service

3 889

National Register of Historic Places
Continuation SheetSection number 7 Page 3

The addition to the north side of the house of the single-bay hipped-roof projection of brick laid in American bond created a T plan and a formal entrance and stair hall. The one bay entrance porch is a recent reconstruction of the original. Four tapered and paneled columns support the porch roof and similarly detailed pilasters are positioned on either side of the entrance. A railing of turned balusters runs between the columns. The six-paneled door resembles those on the south elevation and is flanked by four-pane sidelights matching the second-floor door on the south elevation. A second-floor double-hung window with identical sidelights is located directly above this entrance.

Extending from the east is the one-story wing, which was constructed in two sections. The earliest portion has on its east end an exterior end chimney that is now encased by the last addition to this wing. The early section is sided with beaded board and has a simple cornice of crown molding. Though originally covered with a hipped roof, the roof of this section was altered to tie into the early-nineteenth-century addition to the east end, which has a hipped roof. This final end addition to the east wing is 18' x 18' and rests on a brick basement that is almost fully exposed. The basement level contains a windowed orangerie, wine room, and storage room; the floor above was devoted to a breakfast room.

The south elevation of the east wing has a single six-over-six double-hung window at the west end that may originally have been a door. The original eighteenth-century portion rests on a brick pier foundation and has a central door flanked by six-over-nine double-hung windows. The entrance of this section lacks the front stairs it would have had originally. The end section has a single eight-over-twelve double-hung window above with three ten-over-ten-over-ten triple-hung windows below that illuminate the orangerie. The east end elevation of this wing has a triple-hung orangerie window and a door on the basement level and a nine-over-twelve double-hung window above. The fenestration on the north elevation of the east wing is consistent with that on the south. The end section has a casement basement window with a window above; the eighteenth-century portion has a basement door and a casement window with three windows above.

The west wing was the last addition to the house and dates to about 1839. Its overall dimensions are 28' x 20' and originally consisted of a bedroom, side hall, and small dressing room. The siding on this wing is plain with no beading, the roof is hipped and covered with slate, and the foundation is brick. An interior central end chimney is faced with plaster molded to imitate weatherboards. The west and north elevations each have a door with transom and a single window, and the south elevation has two windows. This wing now contains a modern kitchen, bathroom, and bedroom.

United States Department of the Interior
National Park ServiceNational Register of Historic Places
Continuation SheetSection number 7 Page 4

The interior of the house was substantially reworked at the time that the house was enlarged and the plan changed. The central hall was removed as was the stair it contained and the walls were moved to create two adjoining rooms separated by pocket doors. The north addition created a 20' x 20' entrance hall in which is located a curved corner stair to the second floor. The stair turns ninety degrees and leads to an upstairs sitting room. The stair newel and railing are plain and there is wood paneling beneath the stair. The woodwork and mantels throughout this section are simply detailed and typical of the Greek Revival style. Door and window surrounds consist of architrave molding; the window surrounds also have corner blocks. Plaster ceiling medallions are found in the two principal downstairs rooms. This plasterwork was restored and embellished with acanthus leaves and anthemions in 1976. Two built-in cupboards are located in the west principal room, now the dining room. The cupboard in the northeast corner has shelves with a recessed, carved shell above. The cupboard in the southwest corner has shelves and glass doors. A door to the left of the mantel in this room leads to the current kitchen in the west wing.

A door in the east wall of the east drawing room leads to a hall that connects the brick portion with the eighteenth-century frame wing. This hall area has been partially enclosed to accommodate a bathroom. Since the earliest portion of the house once functioned as the dining room with a breakfast room at the far end, and it is likely that this hall functioned as a pantry. The original dining room retains its late-eighteenth-century woodwork and mantel and today functions as a bedroom. It contains the only picture molding and chair rails in the house. The breakfast room to the east is now used as a study, the walls of which are covered in cypress. The fireplace in this room does not have a mantel.

The second floor has a stair hall in which two baths have been added in the north section and a central hall with flanking bedrooms in the main block of the house. Each bedroom contains a simple wood mantel; the fireplace in the east bedroom has an ornamental metal insert. A stair located in the attic provides access to the flat portion of the roof.

Three historic dependencies are located on the north side of the house. These include a board-and-batten smokehouse that was built about 1845. This gable-fronted structure faces the house and has a louvered vent above the entrance. An office building with detailing identical to that of the west wing dates from about 1839. It is a square weatherboarded building with a hipped roof covered with asphalt shingles. This structure currently lacks its box cornice and has exposed rafter ends. Its entrance faces the house and has an eight-light transom. The windows are six-over-nine, double-hung. The brick kitchen is located to the northeast and faces west. It is covered by a slate, hipped roof pierced by two interior chimneys. Built into the side of a slope, the rear has a fully exposed basement level to the east. A frame addition on a masonry

United States Department of the Interior
National Park Service

**National Register of Historic Places
Continuation Sheet**

Section number 7 Page 5

basement was added to the south, nearly doubling the kitchen's original dimensions.

No longer extant is an assortment of agricultural buildings, an ice house, a log slave cabin, privies, a row of field slave cabins, and a horse stable. Although their sites are known generally, there are no above-ground remains to provide exact locations. A frame, weatherboarded pumphouse with a pyramidal roof is located in close proximity to the north side of the west wing. Because it dates from 1968, the pumphouse is considered noncontributing, as is a recently erected storage building located nearby.

To the southwest of the house is a garden and orchard, both dating from this century but occupying the location of earlier gardens. Delineated by boxwood, the garden consists of an arrangement of brick walks and beds inspired by the garden of the Coke-Garrett House in Williamsburg. A pergola supported by salvaged historic columns is positioned at the west end of the garden and dates from 1989. The historic boxwood that once lined the garden was sold to the Colonial Williamsburg Foundation by a previous owner.

Julie L. Vosmik

United States Department of the Interior
National Park Service

NOV 3 1988

National Register of Historic Places
Continuation SheetSection number 8 Page 2

Island property about 1771. If he did, then this small dwelling has since become the east wing of the present-day Bolling Island house.

Colonel William Bolling, of Bolling Hall in Goochland County, inherited the Bolling Island property and house upon his father's death in 1804. It became one of several farms owned by Bolling, and the house was used as the overseer's residence. Bolling insured a barn and threshing machine at Bolling Island for \$990 in 1815; the house was not insured. In 1820 the buildings on the property were valued at \$700 in the land tax book.

About 1820 Bolling's son-in-law Joseph K. Weisiger and his wife, Anne Mead Bolling, moved into the house and lived there until they immigrated to Albemarle County in 1828. Soon thereafter, Thomas Bolling, a son of William Bolling, took up residence in the house with his wife, Mary Louisa Morris. In 1836 William Bolling deeded the property to Thomas Bolling.

In 1840 the value of the buildings at Bolling Island rose to \$2,000 from \$700 the previous year. Part of the increase is explained by the general reassessment of land taxes that occurred in 1839-1840, but some of it may be accounted for by new construction, although there are no marginal notes in the tax book to this effect.

Thomas Bolling moved from Bolling Island to Bolling Hall following the death of his father in 1845. Reportedly he left his wife and children in residence at Bolling Island. There is no doubt that Bolling Hall was the grander of the two plantations: in the late 1840s, when the buildings at Bolling Island were valued for taxes at \$2,000, those at Bolling Hall were valued at \$7,000.

The Bolling Island tract was sold off in pieces by the children of Thomas Bolling to Allen Y. Stokes, a Richmond merchant, beginning in 1870. By 1882 Stokes owned the entire tract. He did not live there himself, but installed his nephew George Stokes on the property. The younger Stokes operated a post office there as well as a Chesapeake and Ohio Railroad station (no longer standing) that was constructed down the hill from the house.

The property remained in the Stokes family until 1942, when it was sold to a Dutch family, the Verloops. Richard T. Couture purchased it in 1962 and is the current owner.

John S. Salmon/Richard T. Couture

United States Department of the Interior
National Park Service

OCT 3, 1989

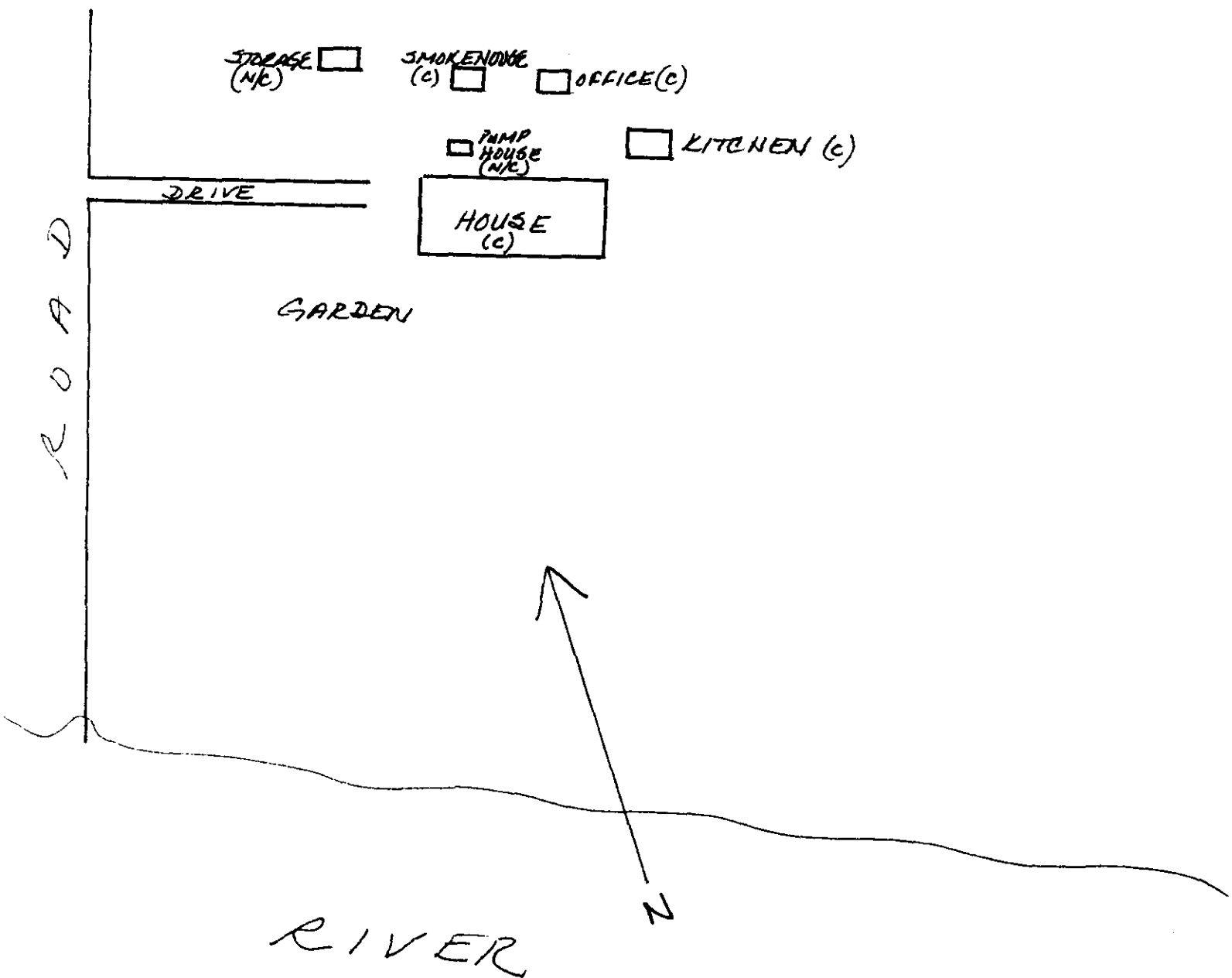
National Register of Historic Places Continuation Sheet

Section number _____ Page _____

SKETCH MAP

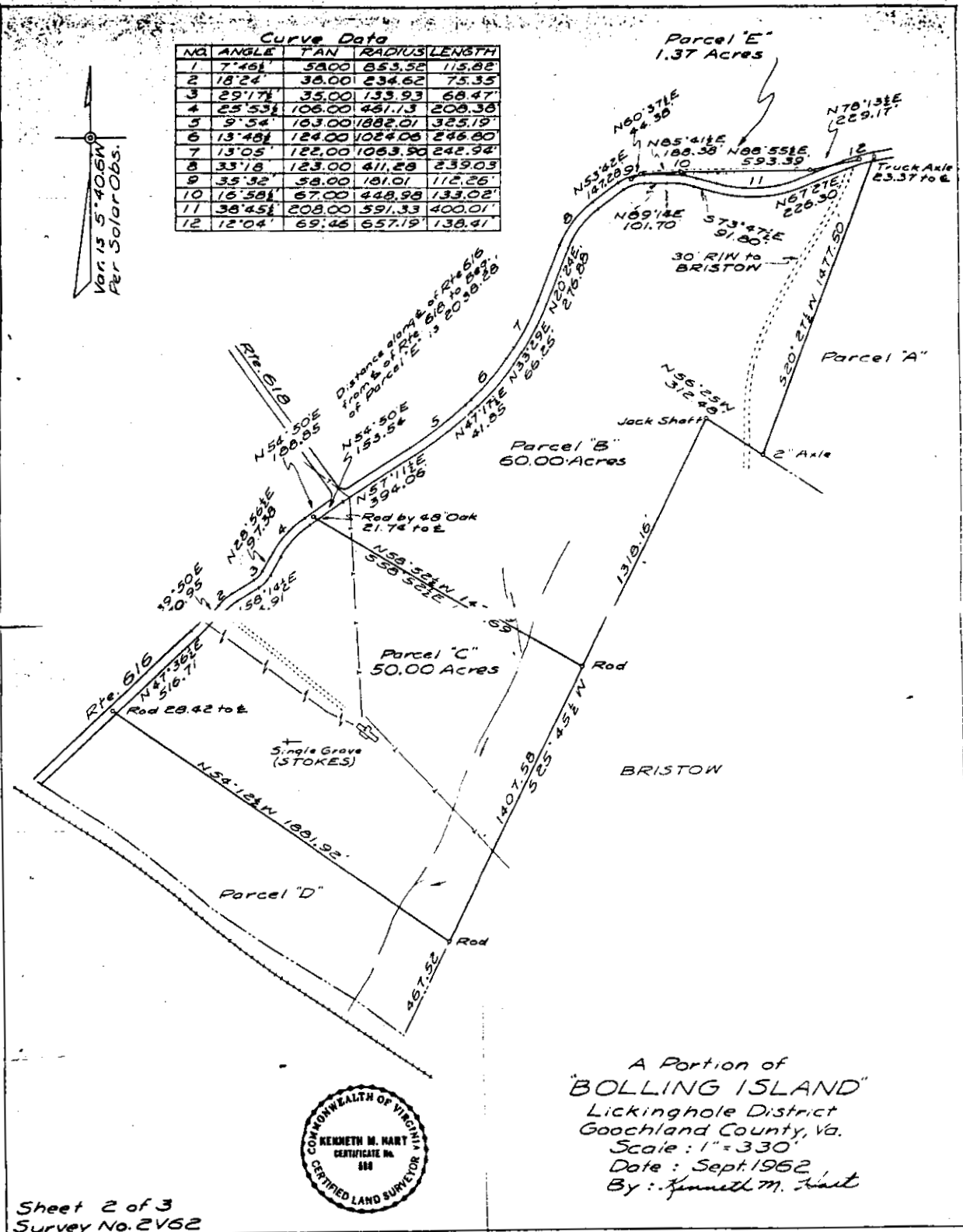
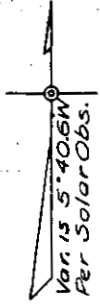
BOLLING ISLAND, GOOCHLAND CO., VA.

Not to scale



Curve Data

NO	ANGLE	TAN	RADIUS	LENGTH
1	7°46'	58.00	853.52	115.82
2	18°24'	38.00	234.62	75.35
3	29°17'	35.00	133.93	68.47
4	25°53'	106.00	461.13	208.38
5	9°54'	163.00	1882.01	325.19
6	13°48'	124.00	1024.08	242.80
7	13°05'	122.00	1063.90	242.94
8	33°18'	123.00	411.28	239.03
9	35°52'	58.00	181.01	112.26
10	16°58'	67.00	448.98	133.02
11	38°45'	208.00	591.33	400.01
12	12°04'	69.46	657.19	138.41



A Portion of
"BOLLING ISLAND"
Lickinghole District
Goochland County, Va.
Scale: 1" = 330'
Date: Sept. 1962
By: Kenneth M. Hart

