

VLR 12/7/15  
NRHP 2/3/16

United States Department of the Interior  
National Park Service

### NATIONAL REGISTER OF HISTORIC PLACES REGISTRATION FORM

This form is for use in nominating or requesting determinations for individual properties and districts. See instructions in How to Complete the National Register of Historic Places Registration Form (National Register Bulletin 16A). Complete each item by marking "x" in the appropriate box or by entering the information requested. If any item does not apply to the property being documented, enter "N/A" for "not applicable." For functions, architectural classification, materials, and areas of significance, enter only categories and subcategories from the instructions. Place additional entries and narrative items on continuation sheets (NPS Form 10-900a). Use a typewriter, word processor, or computer, to complete all items.

**1. Name of Property**  
historic name John D. Bassett High School  
other names/site number Bassett Middle School / VDHR# 044-5169

**2. Location**  
street & number Route 57 not for publication N/A  
city or town Bassett vicinity \_\_\_\_\_  
state Virginia code VA county Henry code 089 Zip 24055

**3. State/Federal Agency Certification**  
As the designated authority under the National Historic Preservation Act of 1986, as amended, I hereby certify that this X nomination request for determination of eligibility meets the documentation standards for registering properties in the National Register of Historic Places and meets the procedural and professional requirements set forth in 36 CFR Part 60. In my opinion, the property X meets does not meet the National Register Criteria. I recommend that this property be considered significant    nationally    statewide X locally. (    See continuation sheet for additional comments.)

[Signature] Date 12/15/05  
Signature of certifying official  
**Virginia Department of Historic Resources**  
State or Federal agency and bureau

In my opinion, the property    meets    does not meet the National Register criteria. (    See continuation sheet for additional comments.)

\_\_\_\_\_  
Signature of commenting or other official Date  
\_\_\_\_\_  
State or Federal agency and bureau

**4. National Park Service Certification**  
I, hereby certify that this property is:  
   entered in the National Register  
   See continuation sheet.  
   determined eligible for the National Register Signature of Keeper \_\_\_\_\_  
   See continuation sheet.  
   determined not eligible for the National Register Date of Action \_\_\_\_\_  
   removed from the National Register  
   other (explain): \_\_\_\_\_

U. S. Department of the Interior  
National Park Service

John D. Bassett High School  
Bassett, VA

**5. Classification**

**Ownership of Property** (Check as many boxes as apply)

- private
- public-local
- public-State
- public-Federal

**Category of Property** (Check only one box)

- building(s)
- district
- site
- structure
- object

**Number of Resources within Property**

Contributing	Noncontributing	
<u>  3  </u>	<input type="checkbox"/>	buildings
<u>  —  </u>	<input type="checkbox"/>	sites
<u>  —  </u>	<u>  1  </u>	structures
<u>  —  </u>	<input type="checkbox"/>	objects
<u>  3  </u>	<u>  1  </u>	Total

Number of contributing resources previously listed in the National Register   0  

Name of related multiple property listing (Enter "N/A" if property is not part of a multiple property listing.)

  N/A  

**6. Function or Use**

**Historic Functions** (Enter categories from instructions)

Cat:   Educational facility   Sub:   school  

\_\_\_\_\_

\_\_\_\_\_

\_\_\_\_\_

\_\_\_\_\_

\_\_\_\_\_

**Current Functions** (Enter categories from instructions)

Cat:   work in progress   \_\_\_\_\_

\_\_\_\_\_

\_\_\_\_\_

\_\_\_\_\_

\_\_\_\_\_

\_\_\_\_\_

**7. Description**

**Architectural Classification** (Enter categories from instructions)

Georgian Revival

\_\_\_\_\_

\_\_\_\_\_

**Materials** (Enter categories from instructions)

foundation concrete

roof slate

walls brick

other wood

\_\_\_\_\_

**Narrative Description** (Describe the historic and current condition of the property on one or more continuation sheets.)

**8. Statement of Significance**

**Applicable National Register Criteria** (Mark "x" in one or more boxes for the criteria qualifying the property for National Register listing)

- X A Property is associated with events that have made a significant contribution to the broad patterns of our history.
- B Property is associated with the lives of persons significant in our past.
- X C Property embodies the distinctive characteristics of a type, period, or method of construction or represents the work of a master, or possesses high artistic values, or represents a significant and distinguishable entity whose components lack individual distinction.
- D Property has yielded, or is likely to yield information important in prehistory or history.

**Criteria Considerations** (Mark "X" in all the boxes that apply.)

- A owned by a religious institution or used for religious purposes.
- B removed from its original location.
- C a birthplace or a grave.
- D a cemetery.
- E a reconstructed building, object or structure.
- F a commemorative property.
- G less than 50 years of age or achieved significance within the past 50 years.

U. S. Department of the Interior  
National Park Service

John D. Bassett High School  
Bassett, VA

Areas of Significance (Enter categories from instructions)

Education, Social History

Architecture

Period of Significance 1947-1955

Significant Dates 1947-1948

Significant Person (Complete if Criterion B is marked above)

n/a

Cultural Affiliation n/a

Architect/Builder Dixon and Norman

Narrative Statement of Significance (Explain the significance of the property on one or more continuation sheets.)

**9. Major Bibliographical References**

**Bibliography**

(Cite the books, articles, and other sources used in preparing this form on one or more continuation sheets.)

**Previous documentation on file (NPS)**

preliminary determination of individual listing (36 CFR 67) has been requested.

previously listed in the National Register

previously determined eligible by the National Register

designated a National Historic Landmark

recorded by Historic American Buildings Survey # \_\_\_\_\_

recorded by Historic American Engineering Record # \_\_\_\_\_

**Primary Location of Additional Data**

State Historic Preservation Office

Other State agency

Federal agency

Local government

University

Other

Name of repository: VA Department of Historic Resources

**10. Geographical Data**

Acreage of Property 3.99

UTM References (Place additional UTM references on a continuation sheet)

Zone Easting Northing

1 17 588184 4052593

3 \_\_\_\_\_

Zone Easting Northing

2 \_\_\_\_\_

4 \_\_\_\_\_

See continuation sheet.

U. S. Department of the Interior  
National Park Service

John D. Bassett High School  
Bassett, VA

**Verbal Boundary Description** (Describe the boundaries of the property on a continuation sheet.)

**Boundary Justification** (Explain why the boundaries were selected on a continuation sheet.)

---

**11. Form Prepared By**

---

name/title: Alison Stone Blanton, Architectural Historian

Organization: Hill Studio, PC date July, 2005

street & number: 120 Campbell Ave SW telephone 540-342-5263

city or town Roanoke state VA zip code 24011

---

**Additional Documentation**

---

Submit the following items with the completed form:

**Continuation Sheets**

**Maps**

- A USGS map (7.5 or 15 minute series) indicating the property's location.
- A sketch map for historic districts and properties having large acreage or numerous resources.

**Photographs**

Representative black and white photographs of the property.

**Additional items** (Check with the SHPO or FPO for any additional items)

---

**Property Owner**

---

(Complete this item at the request of the SHPO or FPO.)

name EMI Imaging Inc. contact: David Wright

street & number 636 Commerce Street telephone 276-340-0433

city or town Stuart state VA zip code 24171

---

**Paperwork Reduction Act Statement:** This information is being collected for applications to the National Register of Historic Places to nominate properties for listing or determine eligibility for listing, to list properties, and to amend existing listings. Response to this request is required to obtain a benefit in accordance with the National Historic Preservation Act, as amended (16 U.S.C. 470 et seq.).

**Estimated Burden Statement:** Public reporting burden for this form is estimated to average 18.1 hours per response including the time for reviewing instructions, gathering and maintaining data, and completing and reviewing the form. Direct comments regarding this burden estimate or any aspect of this form to the Chief, Administrative Services Division, National Park Service, P.O. Box 37127, Washington, DC 20013-7127; and the Office of Management and Budget, Paperwork Reductions Project (1024-0018), Washington, DC 20503.

Continuation Sheet

Section 7 Page 1

---

### Summary Description

John D. Bassett High School, constructed 1947-1948 in the town of Bassett in Henry County, Virginia, is an excellent example of a two-story Georgian-Revival style school building built after World War II. The expansive brick structure is modulated by portico entrances at each end with cupolas above. These three-bay entrances provide public access to the two community spaces on the interior – the auditorium at one end and the gymnasium at the other. The refined Georgian-Revival building features detailing that includes: a hip roof with slate shingles, gabled dormers and octagonal cupolas; Flemish-bond variant brickwork with corner quoins and a water table; three-bay composite-order porticos with arched entrances; and, overall symmetry in massing and fenestration. Additional classrooms were added to the rear of the building in 1961. Sited along the west side of the Smith River, this imposing structure stands at the entrance to the factory town of Bassett, Virginia. A circular drive leads to the school, which is flanked by ball fields and tennis courts. In addition to the tennis courts, which are non-contributing due to their neglected condition and current use as a parking lot, secondary resources include a storage shed, located at the rear of the property, and a frame auxiliary building to the north of the school. The current property boundaries, which do not include the ball field, encompass approximately four acres. Beginning in 2000, the Henry County School Board consolidated its schools into a smaller number of new facilities and abandoned John D. Bassett High School (then Bassett Middle School) entirely in 2004. Today the school and grounds look much like they did in the 1960s.

### Narrative Description

#### Site

John D. Bassett High School, which faces east, currently occupies approximately four acres of level land in the floodplain to the west of the Smith River and Route 57 at the entrance to the town of Bassett in Henry County, Virginia. A circular drive, with flagpoles in the center, leads to the school building, which is flanked by tennis courts (a non-contributing site) to the south and a ball field to the north. The ball field portion of the site is no longer part of the property and is not included in this nomination. Secondary resources include a storage shed at the northwest corner of the property and a frame auxiliary classroom building to the north. An access road runs along the south of the building and the property is bounded a creek and Mountain Road to the west. A steep, wooded hillside rises behind the school property on the western edge.

#### Main School Building

The John D. Bassett High School is an excellent example of a post-World War II school building designed in the Georgian-Revival style. Built on a solid foundation of poured concrete, the brick walls are laid in American bond with a Flemish variant with three courses of American bond between each Flemish course. The brickwork is accented with corner quoins and a water table.

Continuation Sheet

Section 7 Page 2

---

Pedimented porticos with composite-order columns project at either end of the building. The three entrances at each end are arched with fanlights and double-leaf wood paneled doors. The connecting mass is divided by pilasters into four bays, each with three sets of double-hung wood sash windows with twelve-over-nine lites. The hip roof features slate shingles, slender dormers over each bay and octagonal cupolas at each end. A two-story brick addition with flat roof was constructed at the rear of the building in 1961. This addition created two interior courtyards.

The interior plan consists of two wide, double-loaded corridors running transversely across the front and rear of the building with the auditorium and gymnasium at either end. A central corridor on the first floor connects these two corridors and creates two interior courtyards, which are landscaped with shrubbery and other plantings. Entrance lobbies are located at either end with either the administrative offices or the guidance offices adjacent. The administrative offices include a bookstore with sliding glass window opening onto the lobby. The auditorium features a paneled wainscot and apron wall across the stage. The seats are wooden with decorative metal stanchions. The classrooms are relatively intact with simple molded wood baseboards and chair rail, built-in wood storage closets with multi-lite doors and chalkboards. Modern upgrades include the addition of white boards, florescent lights, and dropped ceilings for HVAC and new electrical wiring. The upper floor of the original building includes specialty spaces such as the science labs, home economics lab, and the library. The science labs retain their shelving and laboratory station with water and gas supply. The home economics lab consists of a suite of rooms that include a sewing room with extensive shelving, a demonstration kitchen, a dining room with built-in corner china cabinet, and a bedroom with closets. The library, located at the southeast corner of the building, retains its original shelving, periodicals room, and librarian's office. The rear addition includes other specialty spaces on the first floor such as the band room, the cafeteria and the shops. Interior finishes consist of plaster walls, acoustical tile ceilings (some of which are dropped) and linoleum tile floors. The original pendant globe lights still exist in the two front lobbies and the front corridor.

**Secondary Resources**

Secondary resources include the tennis courts on the south side of the building, a frame storage shed at the northwest corner of the property (rear of the building) and a frame auxiliary classroom building located to the north of the school building. The tennis courts do not contribute to the property as they are currently used for parking and are in disrepair. The storage shed, which appears to date to the construction of the school, is frame with weatherboard siding and a gable roof sheathed with standing-seam metal. The auxiliary building is a frame structure with weatherboard siding and a hipped roof covered in asphalt shingles. It is currently vacant.

Continuation Sheet

Section 8 Page 3

---

## 8. Statement of Significance

The John D. Bassett High School, a two-story, brick Georgian Revival building constructed in 1947-1948, stands at the entrance to the Town of Bassett in Henry County, Virginia as an important symbol of the educational and social history of the community. The school is an excellent example of the Georgian-Revival style as well as progressive school building design in Virginia in the years just after World War II. The design, with its porticoed entrances at either end, emphasizes the role of the school within the community as it celebrates the interior community spaces of the auditorium and the gymnasium with direct access through the impressive porticoes. John D. Bassett High School served as a center of community life in the factory town of Bassett for over fifty years.

### Applicable Criteria

The John D. Bassett High School is eligible for listing on the National Register under Criterion A in the areas of Education and Social History for of its central role to the Bassett community throughout the second half of the twentieth century. The John D. Bassett High School is also eligible under Criterion C for its high quality of design and construction as it exemplifies the Georgian-Revival style and progressive school-building design in Virginia in the period just after World War II. The building and its grounds retain a high level of integrity and are significant on the local level for the period 1947-1955.

### Historical Background

#### The Town of Bassett and the Bassett Furniture Company

The town of Bassett, Virginia was first known as a post office established in 1892 and known as "Bassetts."<sup>1</sup> The post office was built on land owned by John Henry Bassett, who served as the first postmaster. John Henry Bassett was born the son of Alexander Hunter and Mary Koger Bassett in 1827 in Henry County. He married Nancy Jane Spencer and they settled on a farm on the Smith River that would later become the town of Bassett. Their three enterprising sons, John David, Samuel Henry, and Charles Columbus Bassett ran a sawmill on the property in the late 1880s and sold crossties to the Norfolk and Western Railway for the construction of the new rail line to Winston Salem, North Carolina. After the railroad was completed in 1892, the Bassett brothers continued to mill lumber and sold it to furniture manufacturers all over the eastern half of the United States. John David "J.D." Bassett, who also operated a mercantile store, observed from his travels that "furniture certainly could be manufactured in Henry County (Va.) at a tremendous advantage."<sup>2</sup> In 1902, the three Bassett brothers and their brother-in-law Reed L. Stone founded the Bassett Furniture Company with 50 employees. According to J.D. Bassett, this was the first furniture company in Virginia to succeed.<sup>3</sup> Although success was slow at first, it was steady with first year



Continuation Sheet

Section 8 Page 4

---

revenues of \$15,000 increasing to \$35,000 by the third year.<sup>4</sup>

The town of Bassett grew quickly with the growth of the Bassett Furniture Company. The small farming community became a town with a population of 800 by 1915.<sup>5</sup> By 1917, sales at Bassett Furniture Company reached \$1 million, in spite of a disastrous fire that destroyed the plant. Between 1910 and 1920, the population of Henry County increased 10% to approximately 20,000, where it would remain until 1940. In 1925, the Town of Bassett was the second largest town in Henry County with a population of 2,300.<sup>6</sup> The Bassett Furniture Company entered a period of expansion in the 1920s through acquisitions and diversification. In 1931, Bassett Furniture Industries was formed as an umbrella for the various companies. As the major employer in the town of Bassett, which developed on land once part of the family farm, the Bassett family was a generous supporter of the community, donating land for schools and parks. During the years of the Great Depression, Bassett Furniture Industries went to great lengths not to lay off any employees. Pay and shift hours were reduced in order to insure that all employees could keep their jobs and make enough money for the necessities.<sup>7</sup> By the 1940s, the industry and the community appeared to have recovered and were thriving once again. The 1940 census records indicate that county population increased 30% to 26,481 and the Bassett Furniture Industries continued to grow and expand as a leader in the furniture industry. At the beginning of World War II,<sup>J.D.</sup> “Doug” Bassett Jr. negotiated a contract to supply truck bodies for the military to insure that the plants could continue to produce during the war.<sup>8</sup> The period after the war would prove to be the most productive for Bassett Furniture Industries as demand for furniture increased with the population growth of the baby boom and the associated increase in new home construction and suburban sprawl. This growth and prosperity, for both the furniture industry and the town of Bassett, continued through the end of the 20<sup>th</sup> century before the furniture industry began to decline due to changes in the trade regulations. The town of Bassett, which is so closely tied to the furniture industry, began to decline in the early 21<sup>st</sup> century as population decreased for the first time with job cuts.

### Virginia Public Schools

The public school system in Virginia was established in 1870 and one-room schools were constructed throughout the counties of rural Virginia from this time until the early 1900s. Beginning in the 1880s, schools began to be divided into grades, necessitating the construction of two or three room schools for students grouped by class and age. The establishment of high schools was encouraged by the General Assembly with passage of the High School Act in 1906 that provided money to the Literary Fund for use in construction of high schools. After 1920, new consolidated schools were constructed in response to Progressive Era initiatives for school reform. Standardized plans and specifications produced by the State Board of Education’s School Building Service were provided to local school

Continuation Sheet

Section 8 Page 5

---

boards. In response to recommendations by Roosevelt's Country Life Commission, these plans called for a central auditorium or assembly hall surrounded by classrooms. The auditorium provided a space that served as centers for rural communities.<sup>9</sup> This type of consolidated school was constructed throughout Virginia in the years prior to World War II.

The period following World War II posed a challenge to the public school system in Virginia as it struggled to meet the demands of an exploding population in the wake of budget and building constraints that dated back to World War I and the Depression. In spite of strides during the Works Progress Administration to catch up with facility improvements in the construction of new schools, the years during World War II created a tremendous drain on the nation's resources in terms of finances, materials and manpower. After the war, with a national debt that increased from 16.2 billion dollars in 1930 to a phenomenal 269.4 billion dollars in 1946, the public school system was faced with the demands of an exploding population. Along with the rapid rise in birth rate following the war, there was a record rise in taxes, prices, and wages. The teacher pool had been drained from the war years and potential new teachers lured away by more lucrative job opportunities in the industries that were prospering after the war. Many school buildings were either in disrepair, outdated or inadequate in size as capital outlay had been delayed during the years prior to and during the war.<sup>10</sup> In 1947, Governor Tuck called a special session of the General Assembly with the need to improve public education as one of the major issues. As a result of this session, two education commissions were established to study the needs of the education system. Steady increases were made in the appropriations for schools and for teacher's salaries.<sup>11</sup>

In addition to the challenges of teacher salaries and school building maintenance, educational reform since World War I promoted new programs to be included in the school curriculum, including physical education, home economics, and industrial arts. These programs required specialized spaces such as gymnasiums, libraries, laboratories, and shop classrooms. Existing school buildings had to be upgraded to accommodate these new programs and new schools needed to incorporate them. Another challenge to the system was the drastic increase in construction costs by 100% after World War II.<sup>12</sup> Schools built during the post war years tended to be larger, due to the increased population, the expanded programs, and the efforts to consolidate schools. The earlier design of the 1920s with classrooms around a central auditorium now expanded to include a gymnasium as well. This led to designs that often featured primary entrances at each end rather than one central entrance. This era of educational reform and school construction continued to serve the public school system for several decades until desegregation brought about further changes in the 1960s and 1970s. However, the Colonial-Revival style used so prevalently for school buildings throughout the state would soon give way to more modern designs inspired by the International style that replaced the detailing of the revival styles with the simple approach that "form follows function." The 1954 school-planning manual issued by the Virginia Board of Education stated, "no funds should be

Continuation Sheet

Section **8** Page **6**

---

expended for extraneous ornamentation unless every desirable educational facility has been provided in the buildings.”<sup>13</sup> Thus, the 1947-1948 Bassett High School with its full complement of Georgian-Revival detailing marks the end of an era of school design.

### **Bassett School History**

The history of schools in the Bassett community dates to the late 1800s. The first school building was a one-room log structure on land donated by a Mr. Pace. When the Bassett family began their sawmill operations in the late 1880s and early 1890s, they donated land near the present David Bassett Park for a two-room frame school building. This was replaced in 1909 by a four-room frame school on land donated again by John Henry Bassett near the Riverview Primitive Baptist Church. This school was later enlarged to five rooms and two years of high school curriculum were added.<sup>14</sup> In 1906 when the High School Act was passed by the General Assembly, there was only one high school in Henry County, the Ruffner Institute in Martinsville. The first high school in Bassett was constructed in 1915. This school, which was one of five high schools in the county by 1919, was a brick building constructed at the cost of \$30,000 and consisted of “13 classrooms, electric lights, a central heat plant and flushable toilets.”<sup>15</sup> The new school did not include an auditorium or a gymnasium. A third year of high school was added in the 1916-1917 term and Home Economics was added to the curriculum in 1918. The community’s support for the school prompted the effort in 1923 to build an eight-room “teacherage” to provide housing in the town for teachers.<sup>16</sup> During the 1923-1924 session, the school received accreditation as a four-year high school. The high school population continued to grow from enrollment of 358 in 1930 to 783 in 1937.<sup>17</sup> The industrial arts were also added to the curriculum at this time. This growth in both enrollment and curriculum led to the construction of a new school in 1938. This 10-room brick building, located at the upper end of J.D. Bassett Park, was a two-story brick structure designed in the central-auditorium style that was promoted by the State Board of Education School Building Service.<sup>18</sup>

Within four years this school appeared to be inadequate as the Henry County School Board appropriated \$300,000 to build a new school in 1941.<sup>19</sup> The school was to be located in between Bassett and North Bassett, thus indicating that its increased size was probably due to consolidation as well as increases in enrollment. The construction of the new school, however, was delayed by the outbreak of World War II. After the war was over, the county returned to the task of constructing a new high school for Bassett. The firm of Dixon and Norman of Richmond, Virginia designed the building in 1946. Irving Dixon had been associated with the State Board of Education from 1933-1937 before setting up his practice in Richmond.<sup>21</sup> Due to rising prices and material shortages after the war, the construction price for the school more than doubled to \$750,000.<sup>20</sup> The John D. Bassett High School officially opened in 1949. Additional classrooms were constructed in 1961. The school continued to serve as a high school until 1979 when it was converted to a middle school. Due to recent consolidation of school in Henry County, Bassett Middle School closed permanently 2004 and the property was sold to the current owner.

Continuation Sheet

Section 8 Page 7

---

**The Center of Community Life**

Bassett High School has always served as a center for the community of the factory town of Bassett, Virginia. The Bassett family, on whose land the town, the factory and the school were built, has staunchly supported the school throughout its history by donating land and money for school construction. The community, which consisted almost entirely of employees of the Bassett Furniture Company and its related companies, displayed their support for the school in 1923 with donated materials and labor to construct the “teacherage.” Newspaper headlines in 1949 reading “Bassett Schools Keep Pace with Industrial Expansion” pointed out the close relationship between the school and the Bassett factory as it reported “Bassett Industries purchased the old school for \$25,000 and donated \$125,000 to construction of the new school.”<sup>22</sup>

As the only high school in the community, all residents in the town were connected in some way to the school. Recitals, performances, and assemblies in the school’s auditorium over the years brought culture and entertainment to the community for generations. Local beauty pageants were also held in the school auditorium. The gymnasium, ball field, and tennis courts provided venues for recreation and community spirit as townspeople of all ages participated in or supported the various school teams over the years. A highlight of this school spirit occurred in 1958 when the basketball team won the AAA State Championship. The trophy cases, yearbooks and class reunions are testimony to the important role the school played in the community.<sup>23</sup> An important element of the current renovation plan is to keep portions of the school, including the auditorium and gymnasium, open to the community and to host reunions for graduating classes from Bassett High School.

**Notes**

1. “Bassett, Virginia: A History Made in Wood,” 1.
2. “History Reflects Bassett’s 100 Years,” 1.
3. *Ibid*, 2.
4. *Ibid*
5. “Bassett, Virginia: A History Made in Wood,” 2.
6. “Martinsville and Henry County, Virginia,” 1925:21.
7. “History Reflects Bassett’s 100 Years,” 3.
8. *Ibid*.
9. John Kern, “Thematic Evaluation of County Public School Buildings in Southwestern: Virginia.” 2; McCleary “Public Schools in Augusta County, Virginia, 1870-1940.”
10. Blair *The Development of Public Schools in Virginia: 1607-1952*, 1952: 383.
11. *Ibid*, 386-387, 413.
12. *Ibid*, 456.
13. Virginia State Board of Education, *State Planning Manuel* vol. 37, no. 7 , 1954:11.
14. Hoover, “Secondary Education in Henry County, Virginia,” Thesis University of Virginia, Charlottesville, Virginia, 1937: 214-221.
15. *Ibid*, 383.
16. *ibid*.

Continuation Sheet

Section 8 and 9 Page 8

---

17. *ibid*
18. Kern, 2-9; McCleary.
19. "The History of John D. Bassett High School" located in files of the Henry County Historical Society at the Bassett Public Library, 1.5.
20. *ibid*
21. Wells, *The Virginia Architects*, 1997: 121, 332.
22. "Bassett High School," *Martinsville Bulletin*, Bicentennial edition, 1976:2.
23. Wright, 2005.

**9. Bibliography**

- Abbitt, WmM, and Huston St. Clair.. *The Public School System: A Program for Improvement*. Report of the Virginia Commission on Public Schools to the Governor and the General Assembly of Virginia. Richmond: Commonwealth of Virginia Division of Purchase and Print, 1948.
- Bassett Furniture Industries, Inc. "History Reflects Bassett's 100 Year Commitment to Quality & Value," [www.bassettfurniture.com](http://www.bassettfurniture.com), 2003.
- "Bassett High School," *Martinsville Bulletin*, Bicentennial edition, Martinsville, Virginia: July 4, 1976.
- "Bassett, Virginia: A History Made in Wood," unpublished and undated manuscript available in vertical files at the Bassett Branch Library, Henry County.
- Blair, James Lawrence, *The Development of Public School in Virginia 1607-1952*. Commonwealth of Virginia State Board of Education, 1952.
- Census Data, Geospatial and Statistical Data Center, University of Virginia Library, [www.fisher.lib.virginia.edu](http://www.fisher.lib.virginia.edu).
- Henry County Historical Society files, Bassett Public Library, Bassett, Virginia.
- Hoover, Eugene Carl, "Secondary Education in Henry County, Virginia," Thesis University of Virginia, Charlottesville, Virginia, 1937. Copy at Bassett Branch, Henry County Library.
- Kern, John, "Thematic Evaluation of County Public School Buildings in Southwest Virginia." Roanoke Regional Preservation Office, Virginia Department of Historic Resources, October 2000.

Continuation Sheet

**Section 9 and 10**    **Page 9**

---

“Martinsville and Henry County, Virginia,” illustrated special edition *The Henry Bulletin*, January 30 1925.

McCleary, Ann. “Public Schools in Augusta County, Virginia, 1870-1940.” National Register of Historic Places, thematic nomination report, 1984. Virginia Department of Historic Resources, Richmond, Virginia, VDHR File 07-1175.

Pulice, Michael, “Spencer-Penn School, Henry County, Virginia, National Register of Historic Places nomination,” January 2005, DHR# 044-5167.

State Board of Education. Supplement No. 1. Description of Standard School Building. Superintendent of Public Printing. Richmond, Virginia, 1921. Copy at Library of Virginia, Richmond, Virginia.

Virginia Department of Education, School Buildings Service. Architectural Drawings and Plans, Schools, 1920-1970. Library of Virginia, Richmond, Virginia Accession 28487.

Virginia Department of Education, School Buildings Service. Photograph Collection. Library of Virginia, Richmond, Virginia. Digitized images of 3,100 school building photographs.

Virginia State Board of Education. *State Planning Manuel*. Vol. 37, no. 7. Richmond, VA: State Board of Education, November 1954.

Wells, John E. *The Virginia Architects, 1835-1955*. Richmond, VA: New south Architectural Press: 1997.

Wright, David. 1960 Bassett High School Alumnus and current owner. Personal communications. February-March 2005.

## **10. Geographical Data**

### **Verbal Boundary Description**

The 4-acre nominated parcel is identified on the Henry County Tax Map as No. 15.7(4)–Sec.C-12A. The property is bounded on the east (front) by State Route 57 and on the west (rear) by a creek and State Route 712. Adjacent parcels under different ownership bound the property to the north and south.

### **Boundary Justification**

The boundary of the nominated parcels include all of the resources and historic school property from the period of significance, with the exception of the ball field to the north which is no longer part of the property.

Section Adjacent Property Owners Page 12

---

**Adjacent Property Owners:**

LOT 12 15.7(004)000C/012 ,  
HENRY COUNTY SCHOOL BOARD  
PO BOX 7 COLLINSVILLE, VA 24078

LOT 12C 15.7(004)000C/012C,  
BLUE RIDGE REGIONAL LIBRARY  
PO BOX 5264 MARTINSVILLE, VA 24112

LOT 12B 15.7(004)000C/12B ,  
BASSETT FURNITURE INDUSTRIES  
PO BOX 626 BASSETT, VA 24055

LOT 12D 15.7(004)000C/012D,  
HENRY COUNTY BOARD OF SUPERVISORS  
PO BOX 7 COLLINSVILLE, VA 24078

LOT 5, 6R 15.7(004)000B/005, 6R  
CONNIE RAY SNOW  
1151 E CHURCH ST APT MARTINSVILLE, VA 24112

LOT 6A,7 15.7(004)000B/006A,7  
BENFORD D & RENA L STONE  
1030 MORNINGSIDE DR BASSETT, VA 24055

LOT 8 15.7(004)000B/008,  
CURTIS L SR FOSTER, LIFE ESTATE  
PO BOX 342 BASSETT, VA 24055

LOT 23R 15.7(004)000B/023R,  
HENRY COUNTY SCHOOL BOARD  
PO BOX 7 COLLINSVILLE, VA 24078

LOT 39, 40 15.7(004)000A/039,40  
DARRELL L ANE EDWARDS  
3290 RIVERSIDE DRIVE BASSETT, VA 24055

Section Adjacent Property Owners Page 13

---

LOT 41,42 15.7(004)000A/041,42  
HILLVED D & LINDA F CASSELL  
PO BOX 643 BASSETT, VA 24055

LOT 43 15.7(004)000A/043 ,  
JOSEPH & DOROTHY B CRAIGER  
PO BOX 1488 BASSETT, VA 24055

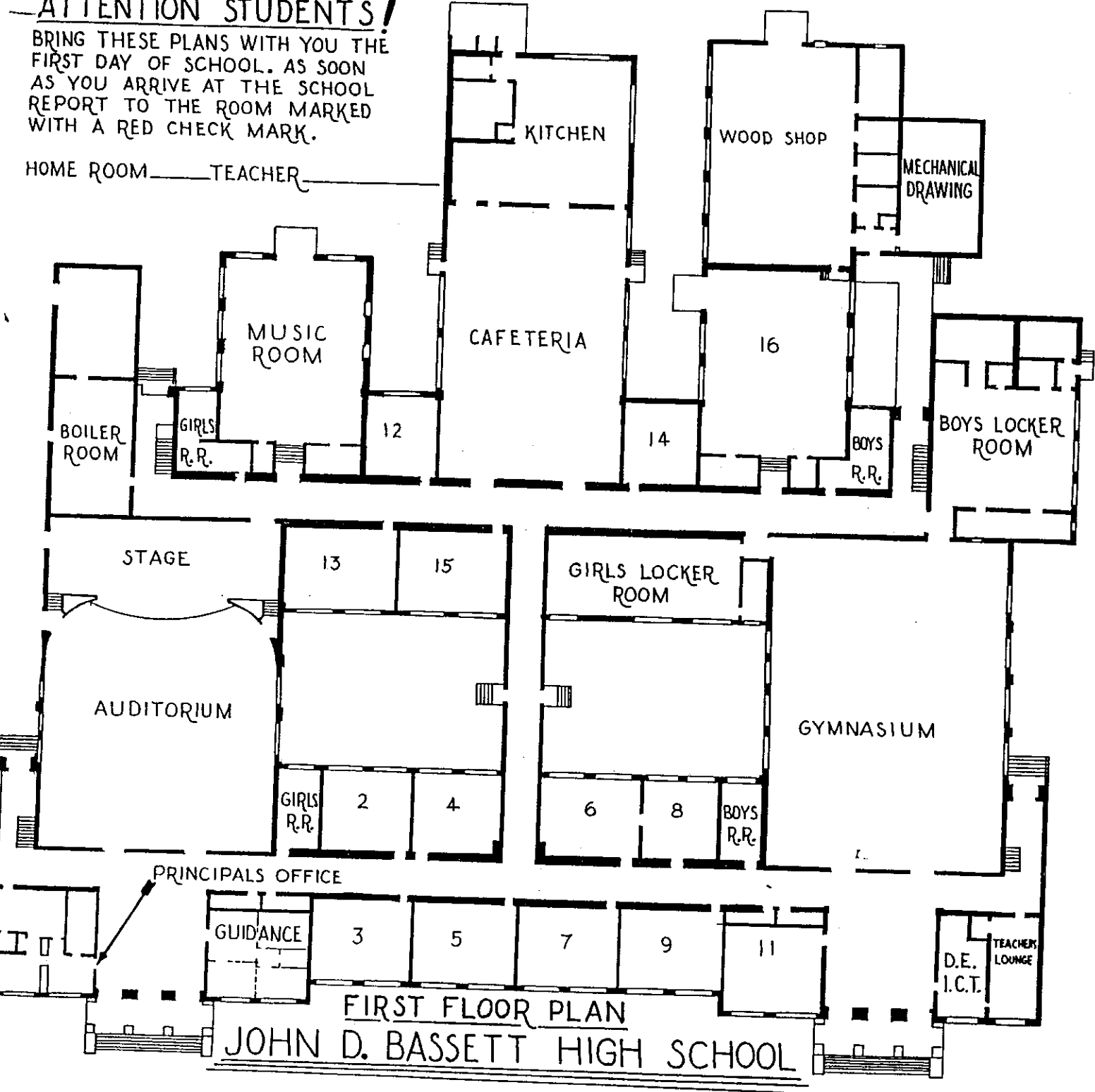
LOT 80B, 15.7(000)000/080B,  
STAR OF BETHLEHEM BAPTIST  
PO BOX 735 BASSETT, VA 24055



# ATTENTION STUDENTS!

BRING THESE PLANS WITH YOU THE FIRST DAY OF SCHOOL. AS SOON AS YOU ARRIVE AT THE SCHOOL REPORT TO THE ROOM MARKED WITH A RED CHECK MARK.

HOME ROOM ——— TEACHER

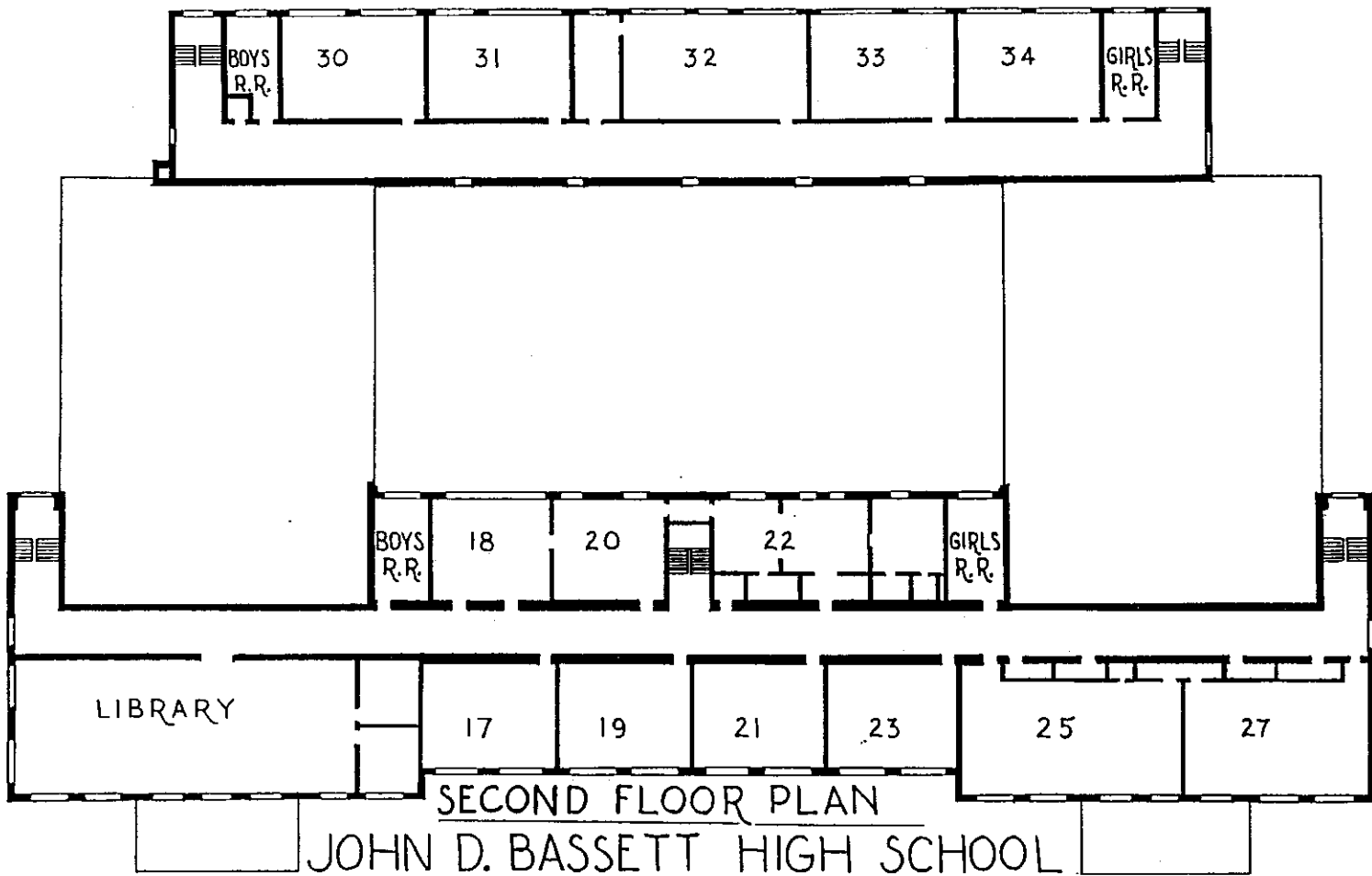


FIRST FLOOR PLAN

JOHN D. BASSETT  
HIGH SCHOOL  
BASSETT, VA

VDHR# 044-5169

FIRST FLOOR PLAN  
JOHN D. BASSETT HIGH SCHOOL



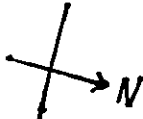
SECOND FLOOR  
PLAN

JOHN D. BASSETT  
HIGH SCHOOL  
BASSETT, VA.

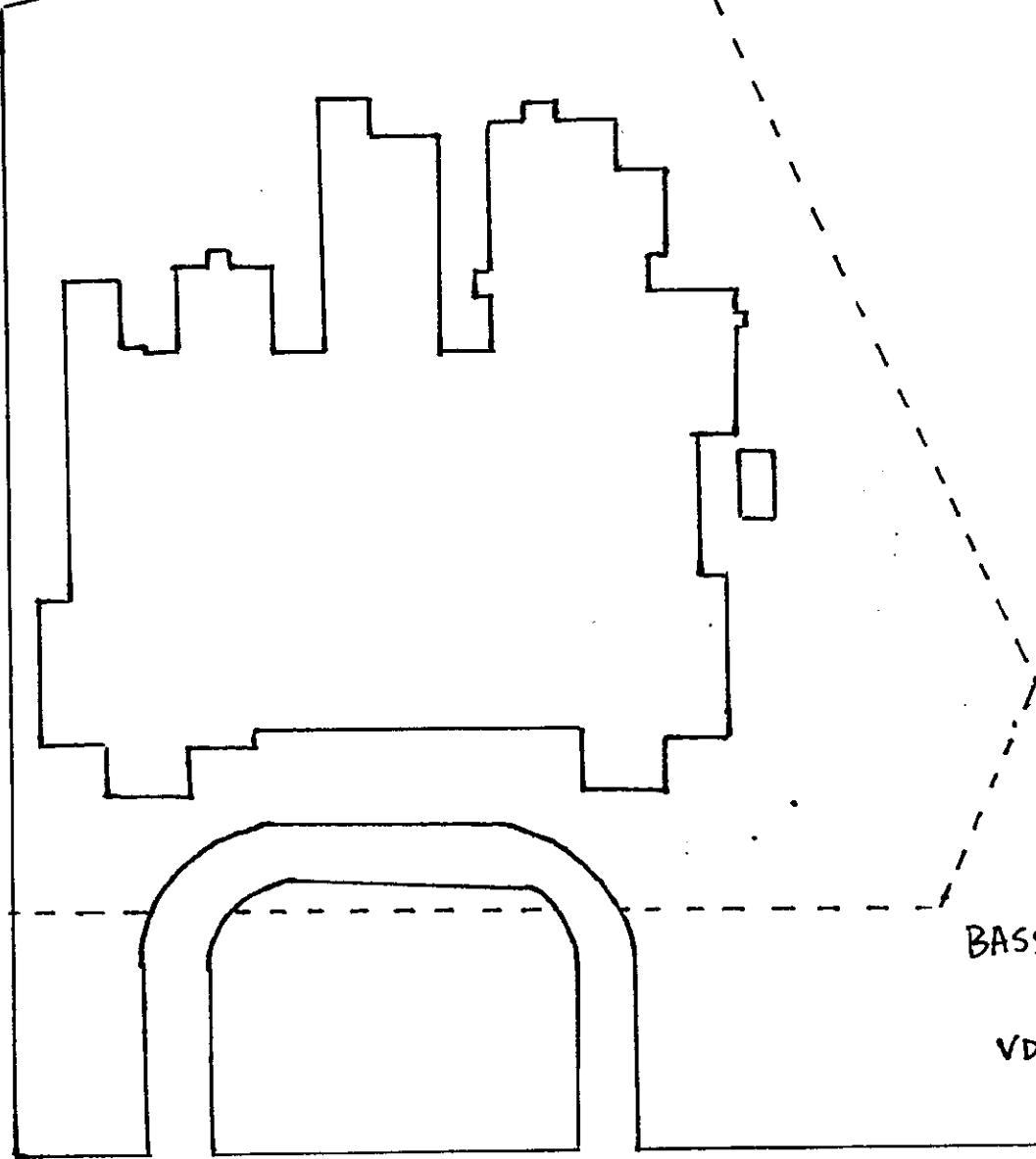
VDHR# 044-5169

MOUNTAIN ROAD

RT. 712



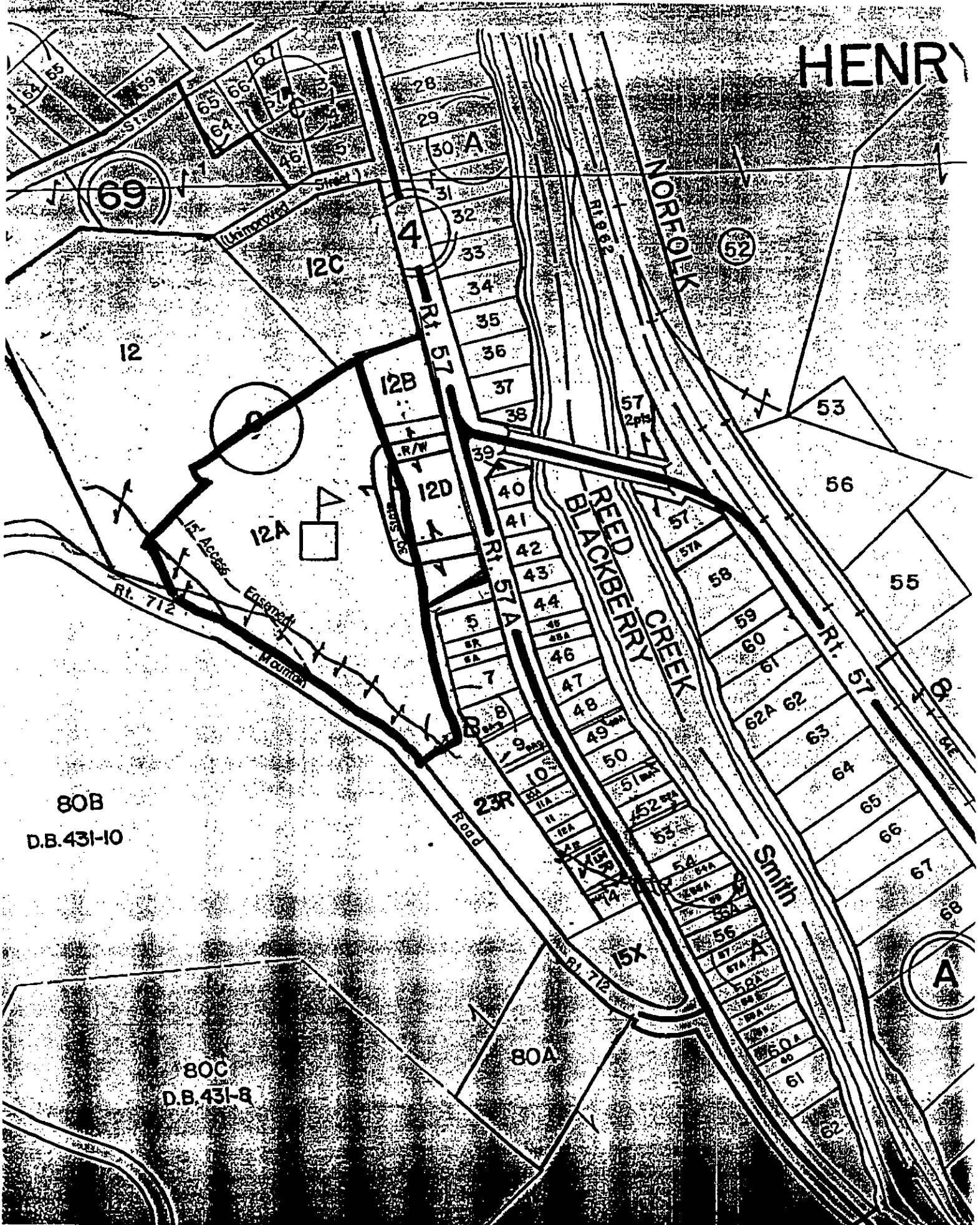
TENNIS COURTS /  
PARKING



BASSETT HIGH SCHOOL  
BASSETT, VA  
VDHR # 044-5169  
n. e. s.

RT. 57

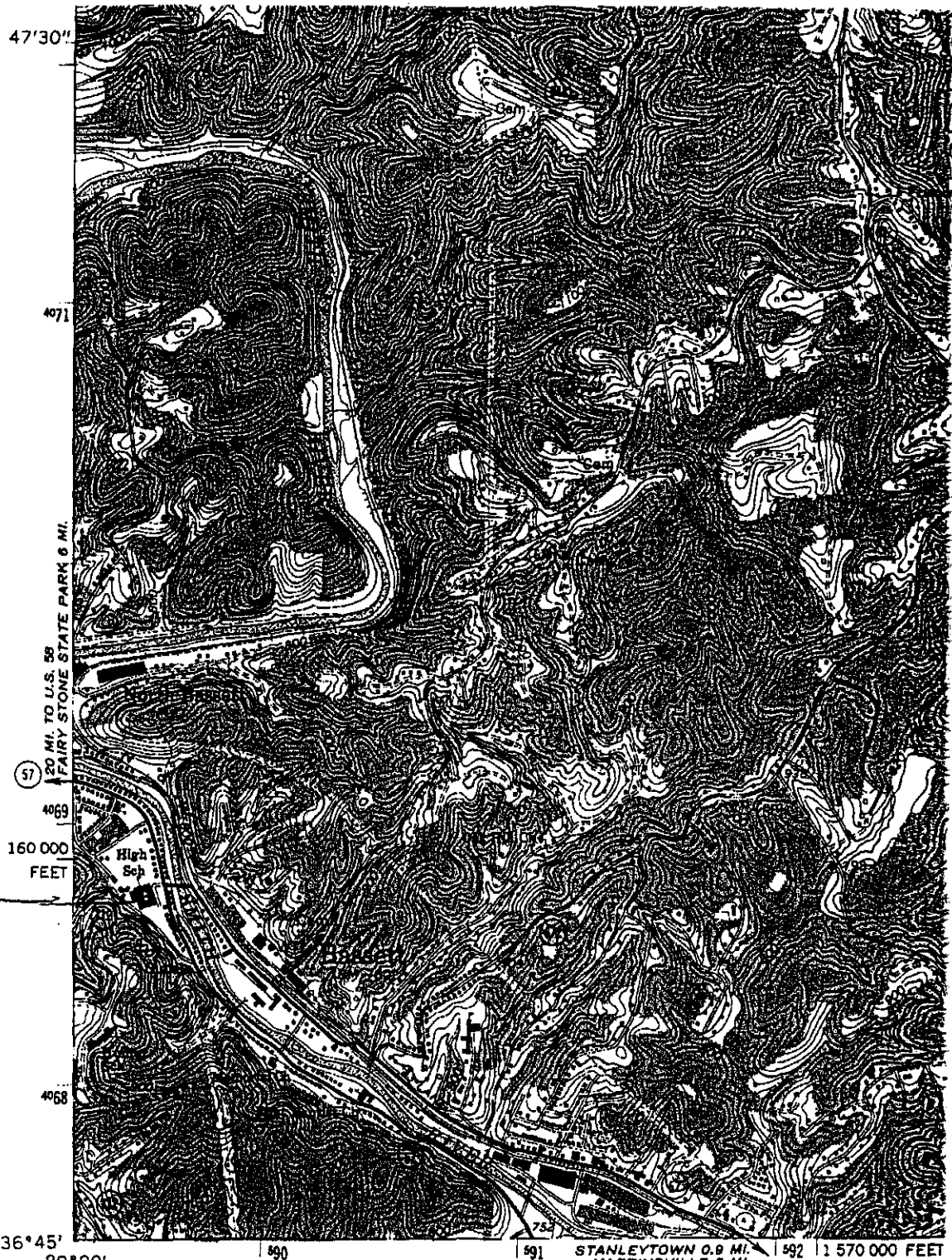
VDHR#044-5169



80B  
D.B.431-10

80C  
D.B.431-8

80A



J.D. BASGETT  
HIGH SCHOOL  
BASGETT, VA  
044-5169  
17 588184 4052593

BASGETT QUAD

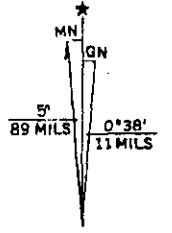
(SAWVILLE)  
4957 II NE

Mapped, edited, and published by the Geological Survey  
Control by USGS and USC&GS

Topography by photogrammetric methods from aerial  
photographs taken 1963. Field checked 1965

Polyconic projection. 1927 North American datum  
10,000-foot grid based on Virginia coordinate system, south zone  
1000-meter Universal Transverse Mercator grid ticks,  
zone 17, shown in blue

Fine red dashed lines indicate selected fence and field lines where  
generally visible on aerial photographs. This information is unchecked  
Revisions shown in purple compiled in cooperation with Commonwealth  
of Virginia agencies from aerial photographs taken 1977 and other  
source data. This information not field checked. Map edited 1978



UTM GRID AND 1978 MAGNETIC  
DECLINATION AT CENTER OF