

VLR-12/11/84

NRHP 2/27/85

PUBLIC SCHOOLS IN AUGUSTA COUNTY, VIRGINIA, 1870-1940  
 VIRGINIA HISTORIC LANDMARKS COMMISSION  
 Thematic National Register Nomination Inventory Form

Historic Name: Estaline Schoolhouse	Common Name: Estaline Schoolhouse
Street Address/Rt. No.: Rt. 601	VHLC File Number: 07-524
Vicinity of: Estaline Valley	Owner: Franklin L. Shuey, 114
USGS Quad: Augusta Springs 7.5	Mulberry St., Apt. 8, Staunton, VA
Date(s): 1909	Architect/Builder: Unknown
Original Use: Schoolhouse	Style: Vernacular
Present Use: Vacant	
Condition: Good	
Altered ___; unaltered <u>X</u>	

Physical Description:

The most recent of the one-room schoolhouses included in this nomination, the Estaline Schoolhouse illustrates the development of the one-room form by the twentieth century. The school retains the familiar rectangular gable entry form, measuring 31 ft by 21 ft, of frame construction and underpinned on concrete piers. The five-panel door with transom light is displaced to one end of the facade with a window to the other side. The 6/6 sash windows are much larger than those found in the late nineteenth century, reflecting a concern for better lighting and ventilation. Carved eave brackets provide more decoration than was usually found on earlier schools.

The interior integrates a new planning feature--a narrow cloak room off the front door. The partition runs alongside the brick stove flue. Horizontal board sheathing finishes all the room, although some more modern panelling has been added in the classroom. Molded trim with carved corner blocks surrounds the doors and windows. A student in the 1930s recalls that a low platform for the teacher's desk had been located in the end opposite the entry.

A cistern with pump remains off the southeast corner.

Statement of Significance:

The Estaline Schoolhouse with its blend of traditional and more modern features reflects the later development of the one-room school in the twentieth century, since this was also one of the last of the county's operating one-room schools. The schoolhouse has not been altered on the outside and very little on the interior.

Grace and Charles Curry sold the schoolhouse and lot to the School Board on April 18, 1912, although the deed notes that the property "has been occupied and used by said party of the second part as school property since the Fall of 1909." The design and date of this schoolhouse are identical to Wallace's Mill Schoolhouse, also located in the Estaline Valley.

The Estaline Schoolhouse was one of the last one-room schoolhouses to close in the County due to the immense local popularity of its teacher. The school closed soon after World War II and students were bused to Craigsville. The County rented the school for many years before selling the property in 1974.

Geographic Data/Acreage: one acre

Verbal Boundary Description: Beginning at a point on S side of VA 601 at the intersection of said route and VA 682; thence extending approx. 200' WSW along S side of VA 601; (continued)  
 Boundary Justification: The bounds have been drawn to include the schoolhouse and the immediate school yard.  
 UTM: 17/644100/4213830

Prepared By: Ann McCleary, Architectural Historian

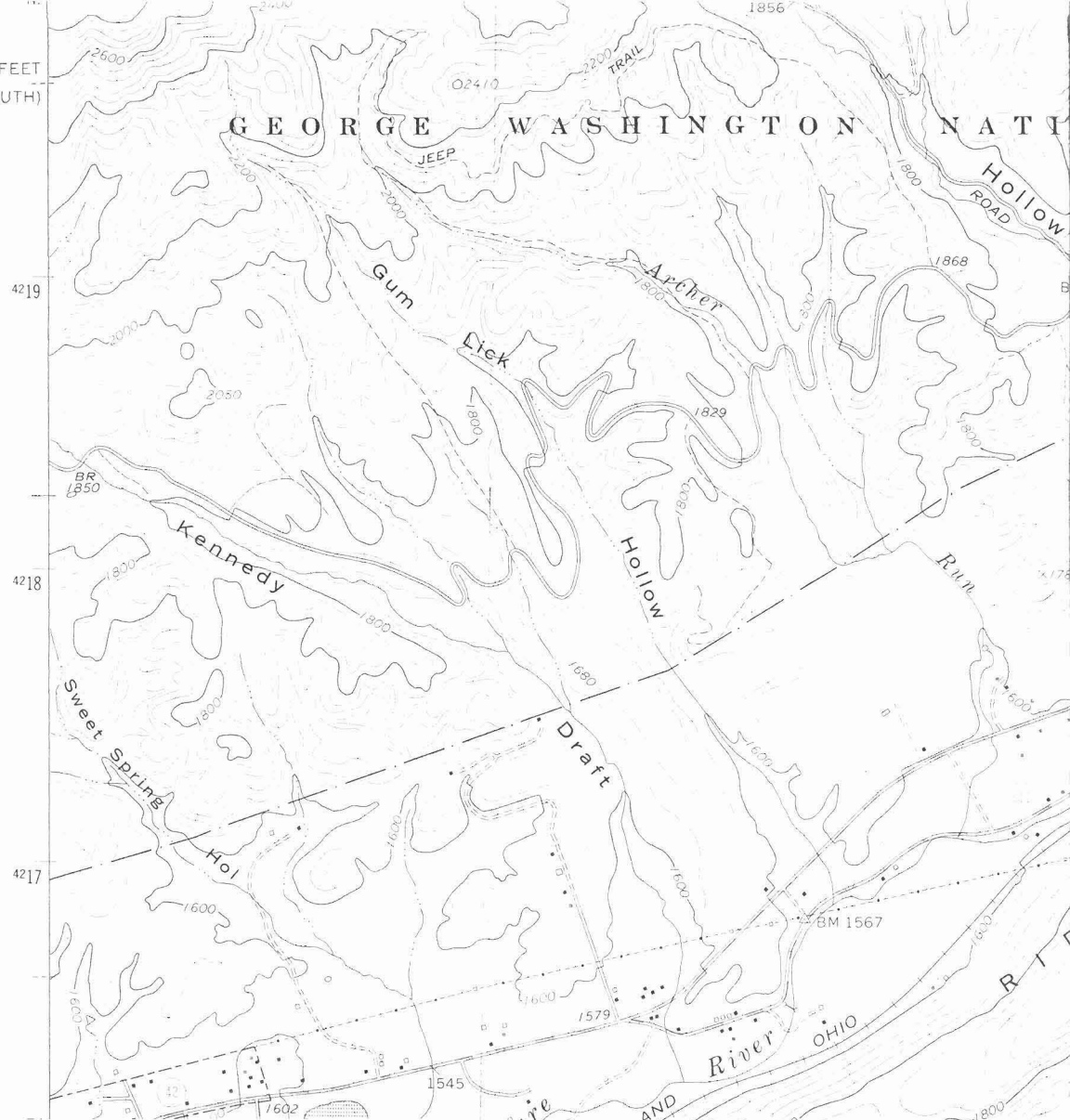
Date Prepared: September 1984

Estaline Schoolhouse  
07-524

Verbal Boundary Description continued

thence approx. 200' SSE; thence approx. 200' ENE to a point on W side of VA 682; thence approx. 200' NNW following W side of VA 682 to point of origin.

650 000 FEET  
(SOUTH)



USGS 7.5' quadrangle (scale:1:24000)  
Augusta Springs, VA 1967 (PR 1978)

- ESTALINE SCHOOLHOUSE, Augusta County, VA  
(PUBLIC SCHOOLS IN AUGUSTA COUNTY, VIRGINIA,  
1870-1940)

UTM References:  
17/644100/4213830

